



MIAMI-DADE EXPRESSWAY AUTHORITY

Fiscal Years 2020-2024 Work Program

Board Approved June 25, 2019



The Miami-Dade Expressway Authority (MDX)

MDX is an agency of the State of Florida, created in 1994 pursuant to Chapter 348, Part I, Florida Statutes, for the purposes of and having the power to acquire, hold, construct, improve, maintain, operate, own and lease an expressway system located in Miami-Dade County. The Authority may also fix, alter, change, establish and collect tolls, rates, fees, rentals, and other charges for the services and facilities of such system and is further authorized to issue bonds. MDX is reported as an Independent Special District of the State of Florida and subject to the provisions of Chapter 189, Florida Statutes (Uniform Special District Accountability Act of 1989) and other applicable Florida Statutes.

MDX currently oversees, operates and maintains five tolled expressways constituting approximately 33.6 centerline-miles and 227.2 lane-miles of roadway in Miami-Dade County, Dolphin Expressway (SR 836); Airport Expressway (SR 112); Don Shula Expressway (SR 874); Gratigny Parkway (SR 924) and the Snapper Creek Expressway (SR 878) and has jurisdiction over NW 138th Street. MDX's Mission is to *“serve as an innovative transportation agency dedicated to the enhancement of mobility in Miami-Dade County”*.

The Miami-Dade Expressway Authority's Five-Year Work Program

The Five-Year Work Program identifies and prioritizes projects that MDX anticipates funding during the next five years. Funding for these projects may be total or partial depending on the phase of the project and the availability of funds. As such, changes are made on an annual basis as priorities are re-evaluated, projects are completed, new projects are identified and the financial capabilities of MDX evolve. The Five-Year Work Program is an important tool used by MDX to effectively manage its program of System preservation, expansion and improvements. The current funding plan includes 48 projects with a total project cost of \$2.1 billion of which \$394.5 million or 18.9% of the total cost has been previously spent through FY 2018, \$177.3 million or 8.5% is projected to be spent in the current FY 2019, \$1.3 billion or 63.3% is budgeted within FY 2020-2024, and \$192.4 million or 9.3% in FY 2025 and FY 2026. Additionally, there are \$256.8 million beyond FY 2024 in Renewal & Replacement projects that are required per the Trust Indenture to keep the MDX system in good condition, as well as \$613.9 million in unfunded needs for long-range mobility projects.

The planned improvements in the MDX Work Program play an integral role in minimizing inefficiencies in our expressways, increasing employment opportunities and household income of Miami-Dade County. It all translates into a better quality of life for our community.

[The Washington Economics Group]

The basis for the Five-Year Work Program is the MDX Long-Range Master Transportation Plan (LRMTP) which includes projects of regional significance that MDX is examining for future implementation. On an annual basis, MDX evaluates the financial feasibility of projects in the LRMTP. Those that are financially feasible are incorporated into the Five-Year Work Program, and those that are not yet deemed feasible remain in the LRMTP. The number of projects or phases of projects added to the Five-Year Work Program

is contingent upon MDX's ability to fund them while maintaining existing programs.

The Work Program Cycle

The Five-Year Work Program for FY 2020-2024 was coordinated with the Miami-Dade County Transportation Planning Organization (TPO) and was approved and adopted by the MDX Board in their regular June 2019 meeting.

Programs and Funding

Program Descriptions

The Five-Year Work Program consists of three aspects of infrastructure construction:

- Five-Year Transportation Improvement Program (TIP) which includes expansion of, as well as capacity improvements to, the MDX highway system, planning projects geared towards improving mobility in Miami-Dade County and implementation of Intelligent Transportation and Open Road Toll Collection Systems.
- Five-Year Capital Improvement Program (CIP) which includes improvements that are not primarily capacity expansion such as operational improvements and safety projects.
- Five-Year Renewal and Replacement Program (R&R) which includes budget for comprehensive system maintenance or repairs not recurring annually and renewals and replacements; repairs or replacements resulting from an emergency caused by some unforeseen or extraordinary occurrence; and all or any part of any System Improvement.

Funding Overview

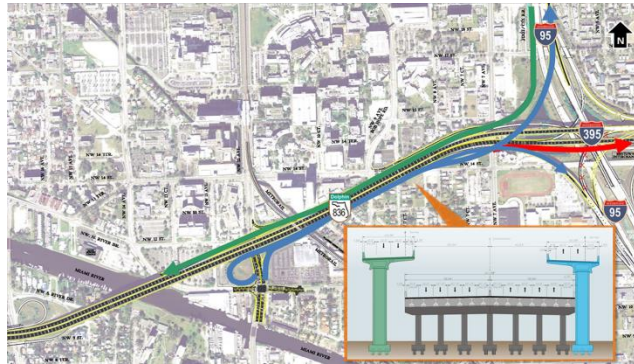
MDX's primary source of revenue is the tolls collected on its five expressways which are reinvested in Miami-Dade County to improve mobility and offer transportation choices within the county. MDX borrows money to fund its projects by selling bonds and uses the toll revenues as collateral. Like a mortgage loan where collateral is offered to the bank to secure the loan until fully paid, MDX offers the projected revenues as assurance that the bond's principal and interest will be paid. MDX does not receive any gas tax, property tax, sales tax or any other source of revenue.

Projects included in the MDX FY 2020-2024 TIP are highlighted within the following pages. The projects have been organized by the following categories:

- Existing System Improvements which includes widening or reconstruction within an existing roadway segment.
- System Expansion Projects which includes include all construction of new roadway segments on new alignments adjacent to the existing system that will increase the total centerline miles of the system.

Existing System Improvement TIP Projects

- **Projects 83611 – SR 836/I-95 Interchange Improvements**



MDX has partnered with FDOT to acquire right-of-way, design and build the SR 836 improvements from NW 17th Avenue to I-95 in conjunction with the I-95/I-395 project. Improvements include widening and operational improvements to SR 836 eastbound from NW 17th Avenue to the I-95 Interchange, double decking of the SR 836 bridges over the Miami River and improvements to the SR 836 westbound mainline and new connector serving southbound I-95 traffic destined westbound on SR 836 and to the Civic Center. The project will improve safety and mobility and improve access to the Hospital District by providing improved access to the area from I-95 and SR 836. The design-build contract was executed in July 2018 and completion is anticipated by FY 2023. Total cost for the MDX project is estimated at \$241.8 million.

- **Project 83628 – SR 836 Operational, Capacity and Interchange Improvements**

This project is constructing an additional eastbound and westbound lane on SR 836 from west of NW 57th Avenue to NW 17th Avenue as well as improving the SR 836 interchanges at NW 57th Avenue, LeJeune Road, NW 27th Avenue and NW 17th Avenue. These improvements will provide additional capacity on the mainline and improve operations in and around the existing interchanges resulting in an improved level of service and safety. This project includes inside shoulder modifications to support the SR 836 Express Bus Service along the corridor. The design-build for this project is underway with an anticipated completion in early FY 2020. Total cost is estimated at \$195.5 million.



SR 836 WB AT NW 27TH AVE EB & WB

- **Project 83629 – SR 836 Interchange Modifications at 87th Avenue**

This project reconstructs the SR 836 Mainline and NW 87th Avenue interchange to enhance operations and improve safety on the SR 836 corridor. It includes the extension of a 4th lane westbound on the mainline from the SR 836/SR 826 interchange to the exit to NW 107th Avenue to alleviate congestion caused by the merging traffic. The project includes, as a contribution to Miami Dade County, the reconstruction of 82nd Avenue to provide alternate north-south connection between Flagler Street and NW 12th Street through NW 82nd Avenue and alleviate congestion at the intersections of NW 87th Avenue and NW 7th and 8th Street. It also includes the construction of NW 7th Street from 76th Avenue to 79th Avenue for a direct connection beneath SR 826, and the Midway pump station improvements to be fully funded by Miami-Dade County. Construction is underway with an anticipated completion date of FY 2020. Total cost is estimated at \$104.9 million.



NW 82ND AVE RECONSTRUCTION & NW 7TH ST

- **Project 83634 – SR 836 New Homestead Extension of Florida’s Turnpike (HEFT) Ramp Connections**

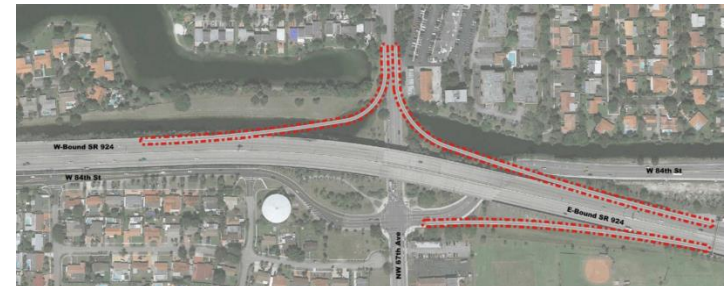


This project consists of new ramps from eastbound and westbound SR 836 to northbound HEFT and southbound HEFT to westbound SR 836. It also includes ramps to and from the west on SR 836 to the Dolphin Station Park & Ride Lot to provide direct access for western Miami Dade County as an alternative to NW 12th Street which is at capacity. It also includes the southbound HEFT to westbound SR 836 Express Lane ramp bridge, funded by Florida’s Turnpike Enterprise (FTE), to provide direct access to westbound SR 836 for future FTE southbound Express Lane users. These ramps were originally contemplated to be part of MDX’s SR 836 Southwest

Extension (83618) project which is currently in the ROW acquisition and preliminary design phase. In light of the Florida’s Turnpike Enterprise (FTE) advancing the construction of their project to alter the current interchange and HEFT mainline configuration, MDX accelerated the MDX ramps portion of this Project. This allows MDX to work with FTE on a unified interchange project that will yield significant efficiencies and eliminate future throwaway costs. Design-build is anticipated to begin in early FY 2020. Total cost is estimated at \$57.3 million.

- **Project 92408 – SR 924 Partial Interchange at NW 67th Avenue**

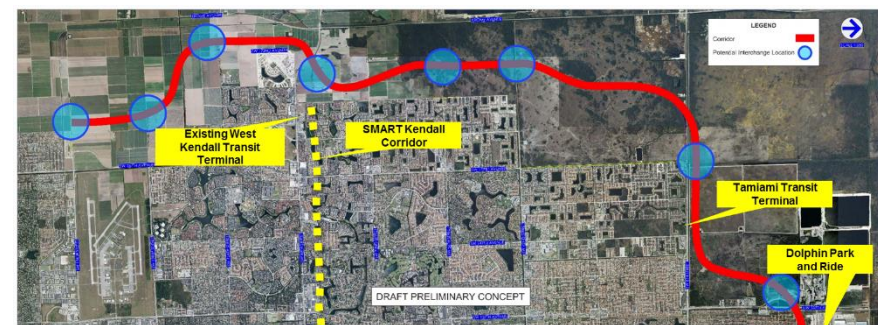
This project will construct a new westbound on-ramp and off-ramp on SR 924 at NW 67th Avenue and new eastbound on-ramp from NW 67th Avenue. This partial interchange will provide congestion relief to Miami Lakes and Hialeah by providing additional traffic movements and access to SR 924 at NW 67th Avenue. Design-build is anticipated to begin in FY 2021. Total cost is estimated at \$32.4 million.



System Expansion TIP Projects

- **Project 83618 – SR 836 Southwest Extension/Kendall Parkway**

This 14-mile multimodal corridor will extend SR 836 from NW 137th Avenue to SW 136th Street and provide the residents in the western portion of the County an additional transportation option. The project is envisioned to include: Express bus service and park & ride facilities at SW 88th Street and at the southern limit of the project; a multi-use recreational trail for walking and biking;



MDX FY 2020-2024 WORK PROGRAM

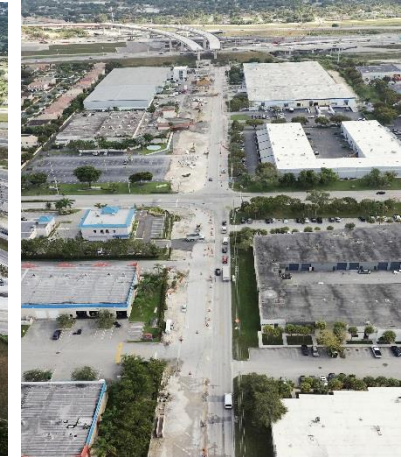
1,000 acres of land to be preserved in its natural state in perpetuity; widening of the existing SR 836 Extension from NW 137th Avenue to the Florida's Turnpike; as well as improvements to 137th Avenue, 8th Street, 157th Avenue, SW 88th Street, SW 104th Street and SW 136th Street to facilitate access. Some of the improvements to local streets are anticipated to be funded by Miami-Dade County. The final design of some of the components of this project is anticipated to begin in FY 2020 with completion of construction over seven years. Total cost is estimated at \$1 billion.

- **Project 87410 – SR 874 Ramp Connector to SW 128th Street**

The construction is underway for the new access ramp connection from the southern terminus of SR 874 to SW 128th Street. This new ramp will provide expressway access to the growing southwest Miami-Dade communities, presently only serviced by access to and from Florida's Turnpike, through the SW 120th Street and the SW 152nd Street ramps. MDX will widen SW 128th Street from two to four lanes from SW 122nd Avenue to SW 137th Avenue as a contribution to Miami-Dade County. A portion of this project is being constructed by the Florida's Turnpike Enterprise under an interagency agreement with MDX as part of a larger project to widen the HEFT and reconstruct the HEFT/SR 874 Interchange to yield efficiencies and eliminate future throwaway costs. This project also includes the extension of SW 127th Avenue from SW 128th Street to SW 124th Street at the request of Miami-Dade County. The construction is anticipated to be completed in FY 2021. Total cost is estimated at \$109.0 million.



SR 874 CONNECTOR BRIDGES

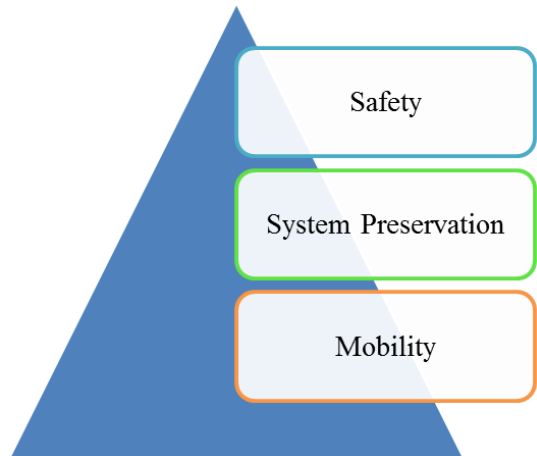


SW 128TH STREET APPROACHING SR 874

- **Project 92404 -SR 924 Extension West to the HEFT**

MDX has completed the PD&E study for the 2.3-mile expressway extension of SR 924 west to the Homestead Extension of the Florida's Turnpike (HEFT) including the improvements to NW 107th Ave from NW 138th Street to NW 170th Street. This work program includes funding for the right-of-way and the construction of substructure in critical areas which will be procured and managed by FTE. The balance of this project is on hold due to funding considerations. The improvements on NW 107th Avenue are fully funded by Miami-Dade County under an Interlocal Agreement with City of Hialeah and City of Hialeah Gardens. The total amount funded for this project is \$54.5 million.

Five-Year Work Program Priorities



Safety

MDX's first priority is to provide safe roadways. To that end MDX has a systematic safety program to identify locations in the system that may be deficient, and to include in its Five-Year Work Program safety projects aimed to reduce the number of traffic crashes and injuries on its system. Safety components are also included on every MDX project.

System Preservation

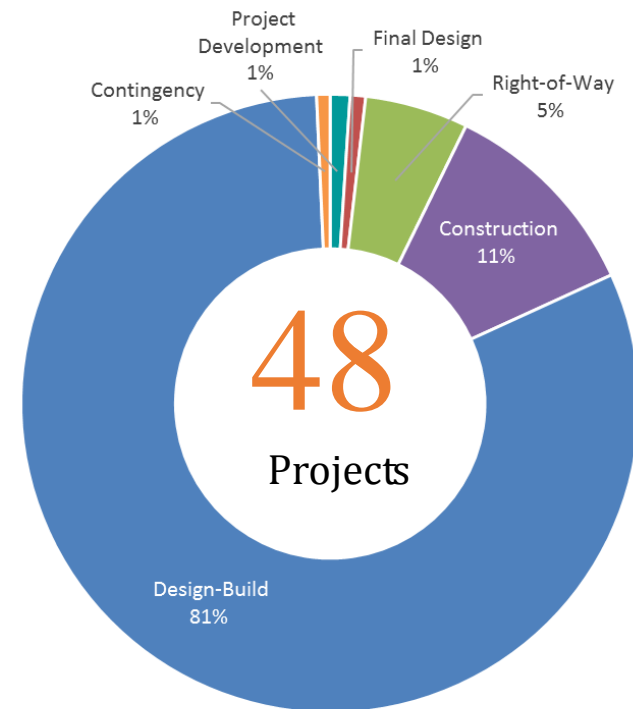
The second priority is to preserve the roadways and bridges in good condition. For this purpose, MDX annually funds a series of renewal and replacement projects that include resurfacing of the roadway and other non-routine repairs.

Mobility Improvements

Once safety and system preservation projects have been funded, MDX funds mobility improvement projects. These reduce congestion by adding capacity to the existing roadways through the construction of new lanes or by expanding its current expressway network.

Five-Year Work Program Breakdown

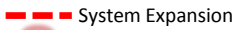

Five-Year Total \$1.3 Billion



Five-Year Work Program Accomplishments

- ✓ Between FY 2020 and FY 2024 an estimated 14,200 jobs will be generated directly and indirectly from the \$1.3 Billion invested in projects contained in our Five-Year Work Program.



 System Expansion
 Proposed Park & Ride Facilities

- TIP PROJECTS**
- 83611** SR 836/I-95 Interchange (In construction)
 - 83618** SR 836 Southwest Extension/ Kendall Parkway
 - 83628** SR 836 Operational, Capacity and Interchange Improvements (In construction)
 - 83629** SR 836 Interchange Modifications at 87th Avenue (In construction)
 - 83634** SR 836 New HEFT Ramps
 - 87410** SR 874 Ramp Connector to SW 128th Street (In construction)
 - 92404** SR 924 Extension West to the HEFT
 - 92408** SR 924 Partial Interchange at NW 67th Avenue

MIAMI-DADE EXPRESSWAY AUTHORITY (MDX)

FISCAL YEARS 2020-2024 WORK PROGRAM AND LONG-RANGE PROGRAM



FUNDED PROGRAM NEEDS

	Program Name	Expenditures Thru FY18	Projected FY19 Expenditures	Programmed in 5-Years (\$000's)					5-Year Cost	Cost Remaining	Total Project Cost
				FY20	FY21	FY22	FY23	FY24			
TIP	Transportation Improvement Program	\$385,294	\$155,327	\$187,384	\$237,470	\$334,433	\$296,186	\$187,423	\$1,242,897	\$172,638	\$1,956,156
R&R	Renewal and Replacement Program	\$2,860	\$6,102	\$8,459	\$6,735	\$4,168	\$2,834	\$4,403	\$26,600	\$0	\$35,562
CIP	Capital Improvement Program	\$6,392	\$15,905	\$4,619	\$10,230	\$14,845	\$10,233	\$7,007	\$46,934	\$19,853	\$89,084
PROGRAM TOTALS		\$394,545	\$177,335	\$200,462	\$254,436	\$353,447	\$309,253	\$198,834	\$1,316,430	\$192,491	\$2,080,801

REQUIRED DEPOSITS INTO THE R&R ACCOUNT

	Program Name	Expenditures Thru FY18	Projected FY19 Expenditures	Programmed in 5-Years (\$000's)					5-Year Cost	Cost Remaining	Total Project Cost
				FY20	FY21	FY22	FY23	FY24			
R&R	Renewal and Replacement Program	\$0	\$0	Included in the funded program					\$0	\$256,796	\$256,796

LONG-RANGE PROGRAM

	Program Name	Expenditures Thru FY18	Projected FY19 Expenditures	Programmed in 5-Years (\$000's)					5-Year Cost	Cost Remaining	Total Project Cost
				FY20	FY21	FY22	FY23	FY24			
TIP	Transportation Improvement Program	\$0	\$0	\$0	\$0	\$0	\$0	\$0	\$0	\$761,962	\$761,962

Total Funded, Required Deposit and Unfunded	Expenditures Thru FY18	Projected FY19 Expenditures	Programmed in 5-Years (\$000's)					5-Year Cost	Cost Remaining	Total Project Cost
			FY20	FY21	FY22	FY23	FY24			
	\$394,545	\$177,335	\$200,462	\$254,436	\$353,447	\$309,253	\$198,834	\$1,316,430	\$1,211,249	\$3,099,560

MIAMI-DADE EXPRESSWAY AUTHORITY (MDX)

TENTATIVE FISCAL YEARS 2020-2024

TRANSPORTATION IMPROVEMENT PROGRAM

FUNDED PROGRAM NEEDS

Project Number	Project Name		Phase	Expenditures Thru FY18	Projected FY19 Expenditures	FY20 THRU FY24 (\$000s)					Cost Remaining	Total Project Cost		
	Description	Project Limits				FY20	FY21	FY22	FY23	FY24				
11212	SR 112 Ramp Improvements at NW 37th Avenue											\$0	\$768	
	New partial interchange at SR 112 and NW 37th Avenue. New movements include eastbound on-ramp at NW 37th Avenue as well as a westbound off-ramp at NW 37th Avenue. Completion of PD&E, Right-Of-Way and Design-Build not funded.	SR 112 at NW 37th Avenue	Project Development	\$642	\$0	\$0	\$0	\$0	\$0	\$0	\$0	\$0	\$642	
			Final Design	\$0	\$0	\$0	\$0	\$0	\$0	\$0	\$0	\$0	\$0	\$0
			Right-of-Way	\$50	\$76	\$0	\$0	\$0	\$0	\$0	\$0	\$0	\$0	\$126
			Construction	\$0	\$0	\$0	\$0	\$0	\$0	\$0	\$0	\$0	\$0	\$0
			Design/Build	\$0	\$0	\$0	\$0	\$0	\$0	\$0	\$0	\$0	\$0	\$0
83611-001	SR 836 / I-95 Interchange Improvements											\$0	\$240,883	
	Improvements to SR 836 from NW 17th Avenue to I-95 including widening and operational improvements to SR 836 eastbound from NW 17th Avenue to I-95 Interchange, double decking of the SR 836 bridges over the Miami River and improvements to the SR 836 westbound mainline and a new connector serving southbound I-95 traffic destined westbound on SR 836 and to the Civic Center.	NW 17th Avenue to I-95	Project Development	\$7,538	\$89	\$0	\$0	\$0	\$0	\$0	\$0	\$0	\$7,627	
			Final Design	\$0	\$0	\$0	\$0	\$0	\$0	\$0	\$0	\$0	\$0	\$0
			Right-of-Way	\$4,742	\$1,351	\$0	\$0	\$0	\$0	\$0	\$0	\$0	\$0	\$6,093
			Construction	\$0	\$0	\$0	\$0	\$0	\$0	\$0	\$0	\$0	\$0	\$0
			Design/Build	\$20,899	\$50,482	\$53,331	\$50,581	\$41,352	\$10,518	\$0	\$0	\$0	\$0	\$227,163
83611-002	ORT Component for the SR 836 / I-95 Interchange Improvements											\$0	\$967	
	Reinstallation of pavement and ORT loop at westbound off ramp to NW 12th Avenue.	SR 836 at NW 12th Avenue	Project Development	\$0	\$0	\$0	\$0	\$0	\$0	\$0	\$0	\$0	\$0	
			Final Design	\$0	\$0	\$0	\$0	\$0	\$0	\$0	\$0	\$0	\$0	\$0
			Right-of-Way	\$0	\$0	\$0	\$0	\$0	\$0	\$0	\$0	\$0	\$0	\$0
			Construction	\$0	\$0	\$0	\$0	\$0	\$0	\$0	\$0	\$0	\$0	\$0
			Design/Build	\$0	\$0	\$0	\$0	\$967	\$0	\$0	\$0	\$0	\$0	\$967
83618-001	SR 836 SW Extension / Kendall Parkway - Project Development & ROW											\$13,228	\$107,881	
	Project development and right-of-way acquisition for the SR 836 Southwest Extension/Kendall Parkway. Includes the development of a Master Plan, completion of PD&E, development of preliminary engineering (30% plans), preparation of procurement packages and acquisition of right-of-way required for all components of the project.	NW 137th Avenue to SW 136th Street	Project Development	\$12,716	\$6,165	\$2,304	\$3,350	\$0	\$0	\$350	\$0	\$0	\$24,885	
			Final Design	\$0	\$0	\$0	\$0	\$0	\$0	\$0	\$0	\$0	\$0	\$0
			Right-of-Way	\$8	\$3,630	\$13,226	\$13,226	\$11,742	\$14,710	\$13,226	\$13,228	\$13,228	\$82,996	\$82,996
			Construction	\$0	\$0	\$0	\$0	\$0	\$0	\$0	\$0	\$0	\$0	\$0
			Design/Build	\$0	\$0	\$0	\$0	\$0	\$0	\$0	\$0	\$0	\$0	\$0
83618-002	SR 836 SW Extension / Kendall Parkway Wetland Mitigation											\$0	\$3,500	
	Creation, restoration and enhancement of wetlands to compensate for unavoidable impacts to wetlands by the construction of the SR 836 Southwest Extension/Kendall Parkway as mandated by the Interlocal Agreement with Miami-Dade County (ILA-MDC-FY19-01).	NW 137th Avenue to SW 136th Street	Project Development	\$0	\$0	\$0	\$0	\$0	\$0	\$0	\$0	\$0	\$0	
			Final Design	\$0	\$0	\$0	\$0	\$0	\$0	\$0	\$0	\$0	\$0	\$0
			Right-of-Way	\$0	\$0	\$0	\$0	\$0	\$0	\$0	\$0	\$0	\$0	\$0
			Construction	\$0	\$0	\$0	\$0	\$1,500	\$1,000	\$1,000	\$0	\$0	\$0	\$3,500
			Design/Build	\$0	\$0	\$0	\$0	\$0	\$0	\$0	\$0	\$0	\$0	\$0
83618-003	SR 836 SW Extension / Kendall Parkway Mainline - Segment 1											\$0	\$371,535	
	Design and construction of a new multimodal corridor that extends SR 836 from NW 137th Avenue to SW 157th Avenue (Segment 1), supports the Miami-Dade County's SMART Plan and provides the platform for the MDX SR 836 Express Transit Service and for future transit alternatives.	NW 137th Avenue to SW 157th Avenue	Project Development	\$0	\$0	\$0	\$0	\$0	\$0	\$0	\$0	\$0	\$0	
			Final Design	\$0	\$0	\$0	\$0	\$0	\$0	\$0	\$0	\$0	\$0	\$0
			Right-of-Way	\$0	\$0	\$0	\$0	\$0	\$0	\$0	\$0	\$0	\$0	\$0
			Construction	\$0	\$0	\$0	\$0	\$0	\$0	\$0	\$0	\$0	\$0	\$0
			Design/Build	\$0	\$0	\$7,431	\$92,884	\$151,329	\$93,884	\$26,007	\$0	\$0	\$0	\$371,535
83618-004	SR 836 SW Extension / Kendall Parkway Mainline - Segment 2											\$33,853	\$260,408	
	Design and construction of new multimodal corridor that extends SR 836 from SW 157th Avenue to SW 56th Street (Miller Drive) (Segment 2), supports the Miami-Dade County's SMART Plan and provides the platform for the MDX SR 836 Express Transit Service and for future transit alternatives. It includes the improvement of Bird Road from SW 157th Avenue to SW 162nd Avenue to be fully funded by Miami-Dade County in future years (LRTP Priority IV).	SW 157th Avenue to SW 56th Street	Project Development	\$0	\$0	\$0	\$0	\$0	\$0	\$0	\$0	\$0	\$0	
			Final Design	\$0	\$0	\$0	\$0	\$0	\$0	\$0	\$0	\$0	\$0	\$0
			Right-of-Way	\$0	\$0	\$0	\$0	\$0	\$0	\$0	\$0	\$0	\$0	\$0
			Construction	\$0	\$0	\$0	\$0	\$0	\$0	\$0	\$0	\$0	\$0	\$0
			Design/Build	\$0	\$0	\$0	\$5,208	\$57,290	\$101,559	\$62,498	\$33,853	\$33,853	\$260,408	\$260,408
83618-005	SR 836 SW Extension / Kendall Parkway Mainline - Segment 3											\$8,620	\$123,141	
	Design and construction of new multimodal corridor that extends SR 836 from SW 56th Street (Miller Drive) to SW 104th Street (Killian Parkway) (Segment 3), supports the Miami-Dade County's SMART Plan and provides the platform for the MDX SR 836 Express Transit Service and for future transit alternatives.	SW 56th Street to SW 104th Street	Project Development	\$0	\$0	\$0	\$0	\$0	\$0	\$0	\$0	\$0	\$0	
			Final Design	\$0	\$0	\$0	\$0	\$0	\$0	\$0	\$0	\$0	\$0	\$0
			Right-of-Way	\$0	\$0	\$0	\$0	\$0	\$0	\$0	\$0	\$0	\$0	\$0
			Construction	\$0	\$0	\$0	\$0	\$0	\$0	\$0	\$0	\$0	\$0	\$0
			Design/Build	\$0	\$0	\$0	\$2,463	\$30,785	\$50,488	\$30,785	\$8,620	\$8,620	\$123,141	\$123,141

MIAMI-DADE EXPRESSWAY AUTHORITY (MDX)

TENTATIVE FISCAL YEARS 2020-2024

FUNDED PROGRAM NEEDS

TRANSPORTATION IMPROVEMENT PROGRAM

Project Number	Project Name		Phase	Expenditures Thru FY18	Projected FY19 Expenditures	FY20 THRU FY24 (\$000s)					Cost Remaining	Total Project Cost		
	Description	Project Limits				FY20	FY21	FY22	FY23	FY24				
83618-006	SR 836 SW Extension / Kendall Parkway Mainline - Segment 4											\$70,076	\$91,008	
	Design and construction of new multimodal corridor that extends SR 836 from SW 104th Street (Killian Parkway) to SW 136th Street (Segment 4), supports the Miami-Dade County's SMART Plan and provides the platform for the MDX SR 836 Express Transit Service and for future transit alternatives.	SW 104th Street to SW 136th Street	Project Development	\$0	\$0	\$0	\$0	\$0	\$0	\$0	\$0	\$0	\$0	
			Final Design	\$0	\$0	\$0	\$0	\$0	\$0	\$0	\$0	\$0	\$0	\$0
			Right-of-Way	\$0	\$0	\$0	\$0	\$0	\$0	\$0	\$0	\$0	\$0	\$0
			Construction	\$0	\$0	\$0	\$0	\$0	\$0	\$0	\$0	\$0	\$0	\$0
			Design/Build	\$0	\$0	\$0	\$0	\$0	\$0	\$0	\$0	\$20,932	\$70,076	\$91,008
83618-007	SR 836 Existing Extension Widening											\$0	\$8,514	
	Design and construction of widening of the existing SR 836 Extension from NW 137th Avenue to the Florida's Turnpike needed to facilitate access to the SR 836 Southwest Extension/Kendall Parkway Segment 1. Includes additional widening and auxiliary lanes along SR 836 between the HEFT and 97th avenue to facilitate traffic flow.	NW 137th Avenue to NW 97th Avenue	Project Development	\$0	\$0	\$0	\$0	\$0	\$0	\$0	\$0	\$0	\$0	
			Final Design	\$0	\$0	\$484	\$113	\$0	\$0	\$0	\$0	\$0	\$0	\$597
			Right-of-Way	\$0	\$0	\$0	\$0	\$0	\$0	\$0	\$0	\$0	\$0	\$0
			Construction	\$0	\$0	\$0	\$7,204	\$713	\$0	\$0	\$0	\$0	\$0	\$7,917
			Design/Build	\$0	\$0	\$0	\$0	\$0	\$0	\$0	\$0	\$0	\$0	\$0
83618-008	SW 88th Street (Kendall Drive) Improvements											\$0	\$6,872	
	Design and construction of improvements to SW 88th Street (Kendall Drive) from SW 162nd Avenue to SW 172nd Avenue to facilitate access to the SR 836 Southwest Extension/Kendall Parkway Segment 3. It consists of the conversion of an existing 4-lane arterial into a 6-lane arterial and modification of 2 existing signals. These improvements are not on the MDX system and will be a capital contribution to FDOT.	SW 162nd Avenue to SW 172nd Avenue	Project Development	\$0	\$0	\$0	\$0	\$0	\$0	\$0	\$0	\$0	\$0	
			Final Design	\$0	\$0	\$0	\$284	\$252	\$95	\$0	\$0	\$0	\$0	\$630
			Right-of-Way	\$0	\$0	\$0	\$0	\$0	\$0	\$0	\$0	\$0	\$0	\$0
			Construction	\$0	\$0	\$0	\$0	\$0	\$2,996	\$3,246	\$0	\$0	\$0	\$6,242
			Design/Build	\$0	\$0	\$0	\$0	\$0	\$0	\$0	\$0	\$0	\$0	\$0
83618-009	Widening of SW 137th from SW 8th Street to SW 26th Street											\$0	\$8,082	
	Design and construction of the widening of SW 137th Avenue between SW 8th Street and SW 26th Street from four to six lanes. MDX will finance, procure, and manage the construction of the roadway improvements as a contributory asset to Miami-Dade County.	SW 8th Street to SW 26th Street	Project Development	\$0	\$0	\$0	\$0	\$0	\$0	\$0	\$0	\$0	\$0	
			Final Design	\$0	\$0	\$718	\$0	\$0	\$0	\$0	\$0	\$0	\$0	\$718
			Right-of-Way	\$0	\$0	\$0	\$0	\$0	\$0	\$0	\$0	\$0	\$0	\$0
			Construction	\$0	\$0	\$0	\$7,364	\$0	\$0	\$0	\$0	\$0	\$0	\$7,364
			Design/Build	\$0	\$0	\$0	\$0	\$0	\$0	\$0	\$0	\$0	\$0	\$0
83618-010	SW 157th Avenue Roadway Improvements											\$0	\$19,209	
	Design and construction of the roadway improvements to SW 157th Avenue for Segment 1 of the SR 836 Southwest Extension/Kendall Parkway consisting of the conversion of an existing 2-lane arterial into a 4-lane arterial, addition of a landscaped median and turn lane, construction of 7 ft. wide northbound and southbound bicycle lanes, southbound sidewalk and improvements of 2 existing signals (Bird Road and SW 8th Street) included in the Miami-Dade County proposed FY 20-24 TIP Proj#PW0000127 at a total cost of \$17.4 million. MDX to be reimbursed by Miami-Dade County.	SW 42nd Street (Bird Road) to SW 8th Street	Project Development	\$0	\$0	\$0	\$0	\$0	\$0	\$0	\$0	\$0	\$0	
			Final Design	\$0	\$0	\$84	\$27	\$0	\$0	\$0	\$0	\$0	\$0	\$111
			Right-of-Way	\$0	\$0	\$0	\$0	\$0	\$0	\$0	\$0	\$0	\$0	\$0
			Construction	\$0	\$0	\$0	\$5,157	\$13,942	\$0	\$0	\$0	\$0	\$0	\$19,098
			Design/Build	\$0	\$0	\$0	\$0	\$0	\$0	\$0	\$0	\$0	\$0	\$0
83618-011	SW 104th Street Roadway Improvements											\$3,121	\$3,532	
	Roadway improvements to SW 104th Street from SW 162nd Avenue to SW 172nd Avenue for Segment 3 of the SR 836 Southwest Extension/Kendall Parkway . These improvements are not on the MDX system and may be a contribution to Miami-Dade County if funding is not available.	SW 162nd Avenue to SW 172nd Avenue	Project Development	\$0	\$0	\$0	\$0	\$0	\$0	\$0	\$0	\$0	\$0	
			Final Design	\$0	\$0	\$0	\$0	\$0	\$91	\$321	\$0	\$0	\$0	\$412
			Right-of-Way	\$0	\$0	\$0	\$0	\$0	\$0	\$0	\$0	\$0	\$0	\$0
			Construction	\$0	\$0	\$0	\$0	\$0	\$0	\$0	\$0	\$3,121	\$3,121	\$3,121
			Design/Build	\$0	\$0	\$0	\$0	\$0	\$0	\$0	\$0	\$0	\$0	\$0
83618-012	Kendall Drive Transit Station and Park & Ride Lot											\$2,863	\$22,034	
	Design and construction of transit station on the inside shoulder of the SR 836 Southwest Extension/Kendall Parkway Segment 3 at SW 88th Street Interchange to be served by MDX Express Transit Service running along the SR 836 inside shoulders at peak hours in the peak direction and to allow Miami-Dade County to explore additional transit opportunities in the future. Design and construction of a park and ride lot in the southeast quadrant of the interchange.	Kendall Parkway at SW 88th Street Interchange	Project Development	\$0	\$0	\$0	\$0	\$0	\$0	\$0	\$0	\$0	\$0	
			Final Design	\$0	\$0	\$0	\$0	\$854	\$728	\$0	\$0	\$0	\$0	\$1,582
			Right-of-Way	\$0	\$0	\$0	\$0	\$0	\$0	\$0	\$0	\$0	\$0	\$0
			Construction	\$0	\$0	\$0	\$0	\$0	\$0	\$3,000	\$14,588	\$2,863	\$20,451	
			Design/Build	\$0	\$0	\$0	\$0	\$0	\$0	\$0	\$0	\$0	\$0	\$0

MIAMI-DADE EXPRESSWAY AUTHORITY (MDX)

TENTATIVE FISCAL YEARS 2020-2024

FUNDED PROGRAM NEEDS

TRANSPORTATION IMPROVEMENT PROGRAM

Project Number	Project Name		Phase	Expenditures Thru FY18	Projected FY19 Expenditures	FY20 THRU FY24 (\$000s)					Cost Remaining	Total Project Cost	
	Description	Project Limits				FY20	FY21	FY22	FY23	FY24			
83618-013	SW 136th Street Transit Station and Park & Ride Lot											\$19,024	\$22,660
	Proposed transit station accessing the SR 836 Southwest Extension/Kendall Parkway Segment 4 at SW 136th Street Interchange to be served by MDX Express Transit Service running along the SR 836 inside shoulders at peak hours in the peak direction and to allow Miami-Dade County to explore additional transit opportunities in the future. Design and construction of a park and ride lot on SW 157th Avenue immediately north of SW 136th Street.	SW 162nd Avenue	Project Development	\$0	\$0	\$0	\$0	\$0	\$0	\$0	\$0	\$0	\$0
			Final Design	\$0	\$0	\$0	\$0	\$0	\$0	\$883	\$752	\$0	\$1,636
		to	Right-of-Way	\$0	\$0	\$0	\$0	\$0	\$0	\$0	\$0	\$0	\$0
			Construction	\$0	\$0	\$0	\$0	\$0	\$0	\$0	\$2,000	\$19,024	\$21,024
			Design/Build	\$0	\$0	\$0	\$0	\$0	\$0	\$0	\$0	\$0	\$0
		SW 172nd Avenue											
83618-014	SR 836 SW Extension/Kendall Parkway Multi-Use Recreational Trail - Segment 1											\$0	\$5,315
	Proposed multi-use recreational trail to enhance non-vehicular access within the SR 836 Southwest Extension/Kendall Parkway. Segment 1 will extend from NW 137th Avenue to SW 157th Avenue.	NW 137th Avenue	Project Development	\$0	\$0	\$0	\$0	\$0	\$0	\$0	\$0	\$0	\$0
			Final Design	\$0	\$0	\$220	\$300	\$0	\$20	\$0	\$0	\$0	\$540
		to	Right-of-Way	\$0	\$0	\$0	\$0	\$0	\$0	\$0	\$0	\$0	\$0
			Construction	\$0	\$0	\$0	\$0	\$0	\$2,770	\$2,006	\$0	\$4,776	
			Design/Build	\$0	\$0	\$0	\$0	\$0	\$0	\$0	\$0	\$0	\$0
		SW 157th Avenue											
83618-015	SR 836 SW Extension/Kendall Parkway Multi-Use Recreational Trail - Segment 2											\$2,965	\$7,608
	Proposed multi-use recreational trail to enhance non-vehicular access within the SR 836 Southwest Extension/Kendall Parkway. Segment 2 will extend from SW 157th Avenue to SW 56th Street.	SW 157th Avenue	Project Development	\$0	\$0	\$0	\$0	\$0	\$0	\$0	\$0	\$0	\$0
			Final Design	\$0	\$0	\$228	\$300	\$0	\$0	\$20	\$0	\$0	\$548
		to	Right-of-Way	\$0	\$0	\$0	\$0	\$0	\$0	\$0	\$0	\$0	\$0
			Construction	\$0	\$0	\$0	\$0	\$0	\$0	\$0	\$4,094	\$2,965	\$7,059
			Design/Build	\$0	\$0	\$0	\$0	\$0	\$0	\$0	\$0	\$0	\$0
		SW 56th Street											
83618-016	SR 836 SW Extension/Kendall Parkway Multi-Use Recreational Trail - Segment 3											\$903	\$9,726
	Proposed multi-use recreational trail to enhance non-vehicular access within the SR 836 Southwest Extension/Kendall Parkway. Segment 3 will extend from SW 56th Street to SW 104th Street.	SW 56th Street	Project Development	\$0	\$0	\$0	\$0	\$0	\$0	\$0	\$0	\$0	\$0
			Final Design	\$0	\$0	\$380	\$300	\$0	\$20	\$0	\$0	\$0	\$700
		to	Right-of-Way	\$0	\$0	\$0	\$0	\$0	\$0	\$0	\$0	\$0	\$0
			Construction	\$0	\$0	\$0	\$0	\$0	\$4,513	\$3,611	\$903	\$9,026	
			Design/Build	\$0	\$0	\$0	\$0	\$0	\$0	\$0	\$0	\$0	\$0
		SW 104th Street											
83618-017	SR 836 SW Extension/Kendall Parkway Multi-Use Recreational Trail - Segment 4											\$6,642	\$7,303
	Proposed multi-use recreational trail to enhance non-vehicular access within the SR 836 Southwest Extension/Kendall Parkway. Segment 4 will extend from SW 104th Street to SW 136th Street.	SW 104th Street	Project Development	\$0	\$0	\$0	\$0	\$0	\$0	\$0	\$0	\$0	\$0
			Final Design	\$0	\$0	\$0	\$0	\$26	\$542	\$93	\$0	\$661	
		to	Right-of-Way	\$0	\$0	\$0	\$0	\$0	\$0	\$0	\$0	\$0	\$0
			Construction	\$0	\$0	\$0	\$0	\$0	\$0	\$0	\$0	\$6,642	\$6,642
			Design/Build	\$0	\$0	\$0	\$0	\$0	\$0	\$0	\$0	\$0	\$0
		SW 136th Street											
83618-018	ORT Component for 83618-SR 836 Southwest Ext/Kendall Parkway - Segment 1											\$0	\$1,893
	The project includes the planning and procurement of services needed for the installation and testing of an open road toll collection system for mainline and ramps within the Kendall Parkway project Segment 1.	NW 137th Avenue	Project Development	\$0	\$0	\$0	\$0	\$0	\$0	\$0	\$54	\$0	\$54
			Final Design	\$0	\$0	\$0	\$0	\$0	\$0	\$0	\$0	\$0	\$0
		to	Right-of-Way	\$0	\$0	\$0	\$0	\$0	\$0	\$0	\$0	\$0	\$0
			Construction	\$0	\$0	\$0	\$0	\$0	\$0	\$0	\$0	\$0	\$0
			Design/Build	\$0	\$0	\$0	\$0	\$0	\$0	\$0	\$1,840	\$0	\$1,840
		SW 157th Avenue											
83618-019	ORT Component for 83618-SR 836 Southwest Ext/Kendall Parkway - Segment 2											\$4,970	\$4,970
	The project includes the planning and procurement of services needed for the installation and testing of an open road toll collection system for mainline and ramps within the Kendall Parkway project Segment 2.	SW 157th Avenue	Project Development	\$0	\$0	\$0	\$0	\$0	\$0	\$0	\$0	\$149	\$149
			Final Design	\$0	\$0	\$0	\$0	\$0	\$0	\$0	\$0	\$0	\$0
		to	Right-of-Way	\$0	\$0	\$0	\$0	\$0	\$0	\$0	\$0	\$0	\$0
			Construction	\$0	\$0	\$0	\$0	\$0	\$0	\$0	\$0	\$0	\$0
			Design/Build	\$0	\$0	\$0	\$0	\$0	\$0	\$0	\$0	\$4,821	\$4,821
		SW 56th Street											
83618-020	ORT Component for 83618-SR 836 Southwest Ext/Kendall Parkway - Segment 3											\$3,735	\$3,735
	The project includes the planning and procurement of services needed for the installation and testing of an open road toll collection system for mainline and ramps within the Kendall Parkway project Segment 3.	SW 56th Street	Project Development	\$0	\$0	\$0	\$0	\$0	\$0	\$0	\$0	\$111	\$111
			Final Design	\$0	\$0	\$0	\$0	\$0	\$0	\$0	\$0	\$0	\$0
		to	Right-of-Way	\$0	\$0	\$0	\$0	\$0	\$0	\$0	\$0	\$0	\$0
			Construction	\$0	\$0	\$0	\$0	\$0	\$0	\$0	\$0	\$0	\$0
			Design/Build	\$0	\$0	\$0	\$0	\$0	\$0	\$0	\$0	\$0	\$3,624
		SW 104th Street											

MIAMI-DADE EXPRESSWAY AUTHORITY (MDX)

TENTATIVE FISCAL YEARS 2020-2024

FUNDED PROGRAM NEEDS

TRANSPORTATION IMPROVEMENT PROGRAM

Project Number	Project Name		Phase	Expenditures Thru FY18	Projected FY19 Expenditures	FY20 THRU FY24 (\$000s)					Cost Remaining	Total Project Cost		
	Description	Project Limits				FY20	FY21	FY22	FY23	FY24				
83618-021	ORT Component for 83618-SR 836 Southwest Ext/Kendall Parkway - Segment 4											\$2,639	\$2,639	
	The project includes the planning and procurement of services needed for the installation and testing of an open road toll collection system for mainline and ramps within the Kendall Parkway project Segment 4.	SW 104th Street to SW 136th Street	Project Development	\$0	\$0	\$0	\$0	\$0	\$0	\$0	\$0	\$77	\$77	
			Final Design	\$0	\$0	\$0	\$0	\$0	\$0	\$0	\$0	\$0	\$0	\$0
			Right-of-Way	\$0	\$0	\$0	\$0	\$0	\$0	\$0	\$0	\$0	\$0	\$0
			Construction	\$0	\$0	\$0	\$0	\$0	\$0	\$0	\$0	\$0	\$0	\$0
			Design/Build	\$0	\$0	\$0	\$0	\$0	\$0	\$0	\$0	\$0	\$2,562	\$2,562
83628	SR 836 Operational, Capacity and Interchange Improvements											\$0	\$195,456	
	New SR 836 Eastbound Auxiliary Lane from NW 57th Avenue to Le Jeune Road; SR 836 Eastbound additional lane from Le Jeune Road to NW 27th Avenue; SR 836 Westbound additional lane from 17th Avenue to 57th Avenue and improvements to the interchanges at NW 57th Avenue, Le Jeune Road, NW 27th Avenue and NW 17th Avenue. It provides the infrastructure necessary to implement the MDX SR 836 Express Transit Service in support of the Miami-Dade County's SMART Plan.	NW 57th Avenue to NW 17th Avenue	Project Development	\$6,227	\$0	\$0	\$0	\$0	\$0	\$0	\$0	\$0	\$6,227	
			Final Design	\$0	\$0	\$0	\$0	\$0	\$0	\$0	\$0	\$0	\$0	
			Right-of-Way	\$5,016	\$1,440	\$0	\$0	\$0	\$0	\$0	\$0	\$0	\$0	\$6,456
			Construction	\$0	\$0	\$0	\$0	\$0	\$0	\$0	\$0	\$0	\$0	\$0
			Design/Build	\$131,004	\$32,330	\$19,438	\$0	\$0	\$0	\$0	\$0	\$0	\$0	\$182,772
83629	SR 836 Interchange Modifications at 87th Avenue											\$0	\$104,930	
	Reconstruction of the NW 87th Avenue Interchange and SR 836 Mainline to 500 feet west of NW 82nd Avenue. Project includes the reconstruction of NW 82nd Avenue from NW 7th Street to NW 12th Street for direct connection beneath SR 836 as a contributory asset to Miami-Dade County. It also includes the construction of NW 7th Street from 76th Avenue to 79th Avenue for direct connection beneath SR 826, and the Midway pump station to be fully funded by Miami-Dade County under ILA-MDC-FY19-03.	SR 836 West of 82nd Avenue to NW 97th Avenue	Project Development	\$717	\$0	\$0	\$0	\$0	\$0	\$0	\$0	\$0	\$717	
			Final Design	\$8,310	\$180	\$139	\$0	\$0	\$0	\$0	\$0	\$0	\$0	\$8,629
			Right-of-Way	\$0	\$0	\$0	\$0	\$0	\$0	\$0	\$0	\$0	\$0	\$0
			Construction	\$55,376	\$26,404	\$13,804	\$0	\$0	\$0	\$0	\$0	\$0	\$0	\$95,585
			Design/Build	\$0	\$0	\$0	\$0	\$0	\$0	\$0	\$0	\$0	\$0	\$0
83634	SR 836 New HEFT Ramp Connections											\$0	\$57,346	
	New connections from SR 836 to the Homestead Extension of the Florida's Turnpike (HEFT) including eastbound SR 836 to northbound HEFT general purpose lanes, and southbound HEFT general purpose lanes to westbound SR 836 as well as ramps to and from the Dolphin Station Park and Ride Lot.	SR 836 to Homestead Extension of Florida's Turnpike	Project Development	\$739	\$344	\$0	\$0	\$0	\$0	\$0	\$0	\$0	\$1,083	
			Final Design	\$0	\$0	\$0	\$0	\$0	\$0	\$0	\$0	\$0	\$0	
			Right-of-Way	\$0	\$0	\$0	\$0	\$0	\$0	\$0	\$0	\$0	\$0	\$0
			Construction	\$0	\$0	\$0	\$0	\$0	\$0	\$0	\$0	\$0	\$0	\$0
			Design/Build	\$0	\$0	\$12,648	\$20,140	\$15,105	\$8,369	\$0	\$0	\$0	\$0	\$56,263
87410	SR 874 Ramp Connector to SW 128th Street											\$0	\$108,977	
	New connection from SR 874 to SW 128th Street. Includes reconstruction of SW 127th Avenue between SW 130th Street and SW 124th Street funded by Miami-Dade County under ILA-MDC-FY17-01 as well as improvements to SW 128th Street west of the HEFT which will be a contributory asset to Miami-Dade County.	SW 128th Street to SR 874	Project Development	\$4,418	\$0	\$0	\$0	\$0	\$0	\$0	\$0	\$0	\$4,418	
			Final Design	\$0	\$0	\$0	\$0	\$0	\$0	\$0	\$0	\$0	\$0	
			Right-of-Way	\$14,003	\$5,492	\$5,000	\$0	\$0	\$0	\$0	\$0	\$0	\$0	\$24,495
			Construction	\$0	\$0	\$0	\$0	\$0	\$0	\$0	\$0	\$0	\$0	\$0
			Design/Build	\$36,813	\$15,985	\$20,000	\$7,267	\$0	\$0	\$0	\$0	\$0	\$0	\$80,064
87413	SR 874 /SW 72nd Street Interchange											\$0	\$2,086	
	New southbound exit ramp to SW 72nd Street and new northbound entrance ramp to SR 874 from SW 72nd Street. Right-Of-Way and Design-Build not funded.	SW 72nd Street at SR 874	Project Development	\$1,658	\$428	\$0	\$0	\$0	\$0	\$0	\$0	\$0	\$2,086	
			Final Design	\$0	\$0	\$0	\$0	\$0	\$0	\$0	\$0	\$0	\$0	
			Right-of-Way	\$0	\$0	\$0	\$0	\$0	\$0	\$0	\$0	\$0	\$0	
			Construction	\$0	\$0	\$0	\$0	\$0	\$0	\$0	\$0	\$0	\$0	
			Design/Build	\$0	\$0	\$0	\$0	\$0	\$0	\$0	\$0	\$0	\$0	
92404	SR 924 Extension West to the Homestead Extension of the Florida Turnpike											\$0	\$60,020	
	Expressway extension from SR 924 west to the Homestead Extension of the Florida's Turnpike (HEFT) including the improvements to NW 107th Ave from NW 138th Street to NW 170th Street. Only the right-of-way and the construction of substructure in critical areas is funded by MDX and will be procured and managed by FTE. Balance of MDX project is on hold due to funding considerations. The improvements on NW 107th Avenue are fully funded by Miami-Dade County under ILA-HIA-FY17-02 with City of Hialeah and City of Hialeah Gardens.	Homestead Extension of Florida's Turnpike to Existing SR 924	Project Development	\$7,476	\$352	\$66	\$0	\$0	\$0	\$0	\$0	\$0	\$7,894	
			Final Design	\$1,198	\$2,311	\$0	\$0	\$0	\$0	\$0	\$0	\$0	\$0	\$3,509
			Right-of-Way	\$6,716	\$1,994	\$1,000	\$0	\$0	\$0	\$0	\$0	\$0	\$0	\$9,709
			Construction	\$11,763	\$0	\$6,994	\$0	\$0	\$0	\$0	\$0	\$0	\$0	\$18,757
			Design/Build	\$0	\$0	\$12,988	\$7,163	\$0	\$0	\$0	\$0	\$0	\$0	\$20,151

MIAMI-DADE EXPRESSWAY AUTHORITY (MDX)

TENTATIVE FISCAL YEARS 2020-2024

FUNDED PROGRAM NEEDS

TRANSPORTATION IMPROVEMENT PROGRAM

Project Number	Project Name		Phase	Expenditures Thru FY18	Projected FY19 Expenditures	FY20 THRU FY24 (\$000s)					Cost Remaining	Total Project Cost	
	Description	Project Limits				FY20	FY21	FY22	FY23	FY24			
92407	SR 924 Extension East to I-95										\$0	\$4,375	
	PD&E Study and Final Design for a new expressway extension from SR 924 at 32nd Avenue east to I-95 as part of the MDX Master Plan and the MPO Long Range Transportation Plan. Final Design and Construction not funded.	Existing SR 924 at NW 32nd Avenue to I-95	Project Development	\$4,357	\$18	\$0	\$0	\$0	\$0	\$0	\$0	\$4,375	
			Final Design	\$0	\$0	\$0	\$0	\$0	\$0	\$0	\$0	\$0	\$0
			Right-of-Way	\$0	\$0	\$0	\$0	\$0	\$0	\$0	\$0	\$0	\$0
			Construction	\$0	\$0	\$0	\$0	\$0	\$0	\$0	\$0	\$0	\$0
			Design/Build	\$0	\$0	\$0	\$0	\$0	\$0	\$0	\$0	\$0	\$0
92408-001	SR 924 Partial Interchange at NW 67th Avenue										\$0	\$28,442	
	New westbound on and off ramp from NW 67th Avenue and new eastbound on-ramp from NW 67th Avenue.	SR 924 at NW 67th Avenue	Project Development	\$899	\$876	\$402	\$0	\$0	\$0	\$0	\$0	\$0	\$2,178
			Final Design	\$0	\$0	\$0	\$0	\$0	\$0	\$0	\$0	\$0	\$0
			Right-of-Way	\$0	\$0	\$500	\$0	\$0	\$0	\$0	\$0	\$0	\$500
			Construction	\$0	\$0	\$0	\$0	\$0	\$0	\$0	\$0	\$0	\$0
			Design/Build	\$0	\$0	\$7,000	\$12,164	\$6,600	\$0	\$0	\$0	\$0	\$25,764
92408-002	ORT Component for the SR 924 Partial Interchange at NW 67th Avenue										\$0	\$3,952	
	ORT hardware and software for new westbound on and off ramp from NW 67th Avenue and new eastbound on-ramp from NW 67th Avenue.	SR 924 at NW 67th Avenue	Project Development	\$0	\$0	\$0	\$0	\$0	\$0	\$0	\$0	\$0	
			Final Design	\$0	\$0	\$0	\$0	\$0	\$0	\$0	\$0	\$0	
			Right-of-Way	\$0	\$0	\$0	\$0	\$0	\$0	\$0	\$0	\$0	
			Construction	\$0	\$0	\$0	\$0	\$0	\$0	\$0	\$0	\$0	
			Design/Build	\$0	\$0	\$0	\$1,976	\$1,976	\$0	\$0	\$0	\$0	\$3,952
50001	Dolphin Station Park & Ride (MDT/FDOT Funded)										\$0	\$20,812	
	Fast track construction of a park and ride/terminal facility to support MDT's SR 836 Express Bus Service, provide a stop for several local bus routes, and serve a potential future east-west commuter rail service on the CSX line. Refer to FDOT FM#43714319401.	North of NW 12 Street and West of Homestead Extension of Florida's Turnpike	Project Development	\$0	\$0	\$0	\$0	\$0	\$0	\$0	\$0	\$0	
			Final Design	\$0	\$0	\$0	\$0	\$0	\$0	\$0	\$0	\$0	
			Right-of-Way	\$0	\$0	\$0	\$0	\$0	\$0	\$0	\$0	\$0	
			Construction	\$0	\$0	\$0	\$0	\$0	\$0	\$0	\$0	\$0	
			Design/Build	\$19,118	\$1,694	\$0	\$0	\$0	\$0	\$0	\$0	\$0	\$20,812
10017	SR 836 Toll System Conversion										\$0	\$25,054	
	SR 836 toll system conversion from the existing toll collection system to an Open Road Tolling (ORT) system.	NW 137th Avenue to I-95	Project Development	\$0	\$0	\$0	\$0	\$0	\$0	\$0	\$0	\$0	
			Final Design	\$0	\$0	\$0	\$0	\$0	\$0	\$0	\$0	\$0	
			Right-of-Way	\$0	\$0	\$0	\$0	\$0	\$0	\$0	\$0	\$0	
			Construction	\$0	\$0	\$0	\$0	\$0	\$0	\$0	\$0	\$0	
			Design/Build	\$22,544	\$1,510	\$1,000	\$0	\$0	\$0	\$0	\$0	\$0	\$25,054
10021	Systemwide ITS Improvements										\$0	\$523	
	Implementation of systemwide ITS improvements resulting from ITS Master Plan recommendations.	Systemwide	Project Development	\$99	\$0	\$0	\$0	\$0	\$0	\$0	\$0	\$99	
			Final Design	\$131	\$0	\$0	\$0	\$0	\$0	\$0	\$0	\$131	
			Construction	\$116	\$177	\$0	\$0	\$0	\$0	\$0	\$0	\$292	
			Design/Build	\$0	\$0	\$0	\$0	\$0	\$0	\$0	\$0	\$0	
			Contingency Cost		\$2,000	\$8,000							\$10,000
TRANSPORTATION IMPROVEMENT PROGRAM TOTALS (FUNDED)				\$385,294	\$155,327	\$187,384	\$237,470	\$334,433	\$296,186	\$187,423	\$172,638	\$1,956,156	

TOTAL FUNDED TIP FY 2020-2024	\$ 1,242,897
TOTAL FUNDED TIP THROUGH FY 2040	\$ 1,956,156

MIAMI-DADE EXPRESSWAY AUTHORITY (MDX)

TENTATIVE FISCAL YEARS 2020-2024

FUNDED PROGRAM NEEDS

RENEWAL AND REPLACEMENT PROGRAM

Project Number	Project Name Description	Phase	Expenditures Thru FY18	Projected FY19 Expenditures	FY20 THRU FY24 (\$000s)					Cost Remaining	Total Project Cost
					FY20	FY21	FY22	FY23	FY24		
30029	Systemwide Bridge Rehabilitation and Joint Repairs									\$0	\$4,126
	Perform bridge rehabilitation and joint repairs systemwide per the Long-Range R&R Program.	Project Development	\$185	\$28	\$0	\$0	\$0	\$0	\$0	\$0	\$212
		Final Design	\$616	\$300	\$0	\$0	\$0	\$0	\$0	\$0	\$917
		Right-of-Way	\$0	\$0	\$0	\$0	\$0	\$0	\$0	\$0	\$0
		Construction	\$481	\$60	\$2,457	\$0	\$0	\$0	\$0	\$0	\$2,997
		Design/Build	\$0	\$0	\$0	\$0	\$0	\$0	\$0	\$0	\$0
30033	Systemwide Pavement Markings Rehabilitation (Phase II)									\$0	\$815
	Systemwide improvements including installation and replacement of Raised Pavement Markers (RPM), thermoplastic pavement markings, audible and vibratory pavement markings, rumble strips and high performance tape.	Project Development	\$0	\$34	\$0	\$0	\$0	\$0	\$0	\$0	\$34
		Final Design	\$0	\$40	\$45	\$0	\$0	\$0	\$0	\$0	\$85
		Construction	\$0	\$0	\$696	\$0	\$0	\$0	\$0	\$0	\$696
		Design/Build	\$0	\$0	\$0	\$0	\$0	\$0	\$0	\$0	\$0
30034	SR 924 Milling & Resurfacing from SR 826 to MM 1.2									\$0	\$1,732
	Milling and Resurfacing of SR 924 from SR 826 to Mile Marker 1.2 per the Long-Range R&R Program.	Project Development	\$79	\$0	\$0	\$0	\$0	\$0	\$0	\$0	\$79
		Final Design	\$83	\$0	\$0	\$0	\$0	\$0	\$0	\$0	\$83
		Construction	\$231	\$1,339	\$0	\$0	\$0	\$0	\$0	\$0	\$1,570
		Design/Build	\$0	\$0	\$0	\$0	\$0	\$0	\$0	\$0	\$0
30037	Systemwide Class V Coating									\$0	\$7,555
	Class V Coating of bridges, noise walls, and barrier walls system-wide in order to maintain the system in good condition.	Project Development	\$44	\$31	\$0	\$0	\$0	\$0	\$0	\$0	\$75
		Final Design	\$3	\$100	\$147	\$0	\$0	\$0	\$0	\$0	\$250
		Construction	\$0	\$0	\$2,892	\$4,338	\$0	\$0	\$0	\$0	\$7,231
		Design/Build	\$0	\$0	\$0	\$0	\$0	\$0	\$0	\$0	\$0
30038	Systemwide Pavement Markings Rehabilitation (Phase III)									\$0	\$1,167
	Systemwide improvements including installation and replacement of Raised Pavement Markers (RPM), thermoplastic, contrast, audible and vibratory pavement markings, rumble strips and high performance tape. Funding includes improvements recommended in FY 2017 of the R&R Program.	Project Development	\$0	\$0	\$0	\$0	\$0	\$63	\$0	\$0	\$63
		Final Design	\$0	\$0	\$0	\$0	\$0	\$86	\$0	\$0	\$86
		Construction	\$0	\$0	\$0	\$0	\$0	\$0	\$1,019	\$0	\$1,019
		Design/Build	\$0	\$0	\$0	\$0	\$0	\$0	\$0	\$0	\$0
30041	SR 878 LED Roadway Lighting									\$0	\$6,167
	SR 878 Lighting Upgrades per the Long-Range R&R Program.	Project Development	\$68	\$0	\$118	\$0	\$0	\$0	\$0	\$0	\$186
		Final Design	\$0	\$0	\$300	\$220	\$0	\$0	\$0	\$0	\$520
		Construction	\$3	\$0	\$0	\$1,482	\$3,976	\$0	\$0	\$0	\$5,461
		Design/Build	\$0	\$0	\$0	\$0	\$0	\$0	\$0	\$0	\$0
30042	SR 836 Replacement of High-Mast Lights with LED									\$0	\$308
	Replacement of High-Mast Lights with LED on SR 836 per the Long-Range R&R Program.	Project Development	\$16	\$0	\$0	\$0	\$0	\$0	\$0	\$0	\$16
		Final Design	\$35	\$0	\$0	\$0	\$0	\$0	\$0	\$0	\$36
		Construction	\$0	\$60	\$195	\$0	\$0	\$0	\$0	\$0	\$256
		Design/Build	\$0	\$0	\$0	\$0	\$0	\$0	\$0	\$0	\$0
30043	Systemwide ORT Gantries & Signature Structures Painting									\$0	\$1,660
	Systemwide ORT Gantries & Signature Structures Painting per the Long-Range R&R Program.	Project Development	\$7	\$53	\$0	\$0	\$0	\$0	\$0	\$0	\$59
		Final Design	\$0	\$100	\$80	\$0	\$0	\$0	\$0	\$0	\$180
		Construction	\$0	\$0	\$1,029	\$392	\$0	\$0	\$0	\$0	\$1,421
		Design/Build	\$0	\$0	\$0	\$0	\$0	\$0	\$0	\$0	\$0
30044	SR 878 Milling & Resurfacing from 87th Avenue to U.S. 1									\$0	\$2,752
	SR 878 Milling & Resurfacing from 87th Avenue to U.S. 1 per the Long-Range R&R Program.	Project Development	\$0	\$0	\$0	\$0	\$96	\$0	\$0	\$0	\$96
		Final Design	\$0	\$0	\$0	\$0	\$0	\$215	\$0	\$0	\$215
		Construction	\$0	\$0	\$0	\$0	\$0	\$947	\$1,494	\$0	\$2,441
		Design/Build	\$0	\$0	\$0	\$0	\$0	\$0	\$0	\$0	\$0
30047	Systemwide Structures Rehabilitation									\$0	\$1,164
	Systemwide Rehabilitation of Structures per the Long-Range R&R Program.	Project Development	\$0	\$0	\$0	\$43	\$0	\$0	\$0	\$0	\$43
		Final Design	\$0	\$0	\$0	\$0	\$97	\$0	\$0	\$0	\$97
		Construction	\$0	\$0	\$0	\$0	\$0	\$1,025	\$0	\$0	\$1,025
		Design/Build	\$0	\$0	\$0	\$0	\$0	\$0	\$0	\$0	\$0

MIAMI-DADE EXPRESSWAY AUTHORITY (MDX)

TENTATIVE FISCAL YEARS 2020-2024

FUNDED PROGRAM NEEDS

RENEWAL AND REPLACEMENT PROGRAM

Project Number	Project Name		Phase	Expenditures Thru FY18	Projected FY19 Expenditures	FY20 THRU FY24 (\$000s)					Cost Remaining	Total Project Cost	
	Description					FY20	FY21	FY22	FY23	FY24			
30048	Systemwide Pavement Markings Rehab. (Phase IV)										\$0	\$2,019	
	Systemwide rehabilitation of pavement markings, RPM and contrast, audible pavement markings and high-performance tape for all mainline and ramps as programmed in the Long-Range R&R program.		Project Development	\$0	\$0	\$0	\$0	\$0	\$29	\$0	\$0	\$29	
			Final Design	\$0	\$0	\$0	\$0	\$0	\$99	\$0	\$0	\$0	\$99
			Right-of-Way	\$0	\$0	\$0	\$0	\$0	\$0	\$0	\$0	\$0	\$0
			Construction	\$0	\$0	\$0	\$0	\$0	\$0	\$0	\$1,890	\$0	\$1,890
			Design/Build	\$0	\$0	\$0	\$0	\$0	\$0	\$0	\$0	\$0	\$0
30052	MDX Headquarters Roof Replacement										\$0	\$279	
	MDX Headquarters Roof Replacement per the Long-Range R&R Program.		Project Development	\$0	\$0	\$0	\$0	\$0	\$0	\$0	\$0	\$0	
			Final Design	\$0	\$29	\$0	\$0	\$0	\$0	\$0	\$0	\$0	\$29
			Right-of-Way	\$0	\$0	\$0	\$0	\$0	\$0	\$0	\$0	\$0	\$0
			Construction	\$0	\$250	\$0	\$0	\$0	\$0	\$0	\$0	\$0	\$250
			Design/Build	\$0	\$0	\$0	\$0	\$0	\$0	\$0	\$0	\$0	\$0
30055	SR 836 & SR 112 Signature & Sign Structure Painting										\$0	\$371	
	SR 836 & SR 112 Signature & Sign Structure Painting per the Long-Range R&R Program.		Project Development	\$0	\$0	\$0	\$0	\$0	\$0	\$0	\$0	\$0	
			Final Design	\$0	\$0	\$0	\$0	\$0	\$57	\$0	\$0	\$0	\$57
			Right-of-Way	\$0	\$0	\$0	\$0	\$0	\$0	\$0	\$0	\$0	\$0
			Construction	\$0	\$0	\$0	\$0	\$0	\$314	\$0	\$0	\$0	\$314
			Design/Build	\$0	\$0	\$0	\$0	\$0	\$0	\$0	\$0	\$0	\$0
30056	Civil Infrastructure Modifications at Toll Zones on SR 874, SR 878										\$0	\$4,186	
	Modification of infrastructure at toll zones on SR 874, SR 878 and SR 924.		Project Development	\$219	\$0	\$0	\$0	\$0	\$0	\$0	\$0	\$219	
			Final Design	\$282	\$0	\$0	\$0	\$0	\$0	\$0	\$0	\$0	\$282
			Construction	\$507	\$3,178	\$0	\$0	\$0	\$0	\$0	\$0	\$0	\$3,685
			Design/Build	\$0	\$0	\$0	\$0	\$0	\$0	\$0	\$0	\$0	\$0
30057	MDX Headquarters Chiller Replacement										\$0	\$259	
	Replacement of chillers at the MDX Headquarter building.		Project Development	\$0	\$0	\$0	\$0	\$0	\$0	\$0	\$0	\$0	
			Final Design	\$0	\$0	\$0	\$22	\$0	\$0	\$0	\$0	\$0	\$22
			Construction	\$0	\$0	\$0	\$237	\$0	\$0	\$0	\$0	\$0	\$237
			Design/Build	\$0	\$0	\$0	\$0	\$0	\$0	\$0	\$0	\$0	\$0
	Contingency Cost				\$500	\$500						\$1,000	
EWAL AND REPLACEMENT PROGRAM TOTALS (FUNDED)				\$2,860	\$6,102	\$8,459	\$6,735	\$4,168	\$2,834	\$4,403	\$0	\$35,562	

TOTAL FUNDED R&R FY 2020-2024	\$ 26,600
TOTAL FUNDED R&R THROUGH FY 2040	\$ 35,562

MIAMI-DADE EXPRESSWAY AUTHORITY (MDX)

TENTATIVE FISCAL YEARS 2020-2024

FUNDED PROGRAM NEEDS

CAPITAL IMPROVEMENT PROGRAM

Project Number	Project Name		Phase	Expenditures Thru FY18	Projected FY19 Expenditures	FY20 THRU FY24 (\$000s)					Cost Remaining	Total Project Cost	
	Description	Project Limits				FY20	FY21	FY22	FY23	FY24			
40041	SR 924 ORT System Replacement											\$0	\$5,232
	SR 924 ORT System Replacement	SR 826 to NW 27th Avenue	Project Development	\$0	\$0	\$0	\$0	\$0	\$0	\$0	\$0	\$0	\$0
			Final Design	\$0	\$0	\$0	\$0	\$0	\$0	\$0	\$0	\$0	\$0
			Construction	\$0	\$0	\$0	\$0	\$0	\$0	\$0	\$0	\$0	\$0
			Design/Build	\$1,466	\$3,767	\$0	\$0	\$0	\$0	\$0	\$0	\$0	\$5,232
40042	SR 878 ORT System Replacement											\$0	\$4,113
	SR 878 ORT System Replacement	SR 874 to U.S. 1	Project Development	\$0	\$0	\$0	\$0	\$0	\$0	\$0	\$0	\$0	\$0
			Final Design	\$0	\$0	\$0	\$0	\$0	\$0	\$0	\$0	\$0	\$0
			Right-of-Way	\$0	\$0	\$0	\$0	\$0	\$0	\$0	\$0	\$0	\$0
			Construction	\$0	\$0	\$0	\$0	\$0	\$0	\$0	\$0	\$0	\$0
			Design/Build	\$1,123	\$2,989	\$0	\$0	\$0	\$0	\$0	\$0	\$0	\$4,113
40043	SR 874 ORT System Replacement											\$0	\$8,810
	SR 874 ORT System Replacement	Homestead Extension of Florida's Turnpike to SR 826	Project Development	\$0	\$0	\$0	\$0	\$0	\$0	\$0	\$0	\$0	\$0
			Final Design	\$0	\$0	\$0	\$0	\$0	\$0	\$0	\$0	\$0	\$0
			Construction	\$0	\$0	\$0	\$0	\$0	\$0	\$0	\$0	\$0	\$0
			Design/Build	\$2,682	\$6,129	\$0	\$0	\$0	\$0	\$0	\$0	\$0	\$8,810
40044	SR 924 Drainage Improvements at NW 32nd Avenue											\$0	\$2,493
	Upgrade the SR 924 drainage infrastructure at NW 32nd Avenue.	Douglas/LeJeune Connector to NW 32nd Avenue	Project Development	\$0	\$0	\$0	\$0	\$0	\$0	\$0	\$0	\$0	\$0
			Final Design	\$231	\$0	\$0	\$0	\$0	\$0	\$0	\$0	\$0	\$231
			Construction	\$634	\$1,628	\$0	\$0	\$0	\$0	\$0	\$0	\$0	\$2,262
			Design/Build	\$0	\$0	\$0	\$0	\$0	\$0	\$0	\$0	\$0	\$0
40045	Wrong Way Safety Program											\$0	\$3,674
	Installation "Wrong Way - Do Not Enter" and "One-Way" signs, pavement reconfiguration and radar/cameras for wrong way detection at 25 identified locations in the MDX System.	Systemwide	Project Development	\$42	\$28	\$0	\$0	\$0	\$0	\$0	\$0	\$0	\$70
			Final Design	\$37	\$157	\$10	\$0	\$0	\$0	\$0	\$0	\$0	\$204
			Construction	\$0	\$0	\$1,516	\$1,884	\$0	\$0	\$0	\$0	\$0	\$3,399
			Design/Build	\$0	\$0	\$0	\$0	\$0	\$0	\$0	\$0	\$0	\$0
40048	SR 836 Shoulder Modifications from 137th Avenue Interchange to 97th Avenue											\$0	\$35
	Widening and strengthening of inside shoulders along SR 836 from 97th Ave to west of 107th Ave to accommodate express bus service by Miami-Dade Transit. Addition of friction course to the inside shoulder, eastbound and westbound, between NW 137th Avenue interchange and 97th Avenue.	NW 137th Avenue Interchange to NW 97th Avenue	Project Development	\$34	\$1	\$0	\$0	\$0	\$0	\$0	\$0	\$0	\$35
			Final Design	\$0	\$0	\$0	\$0	\$0	\$0	\$0	\$0	\$0	\$0
			Construction	\$0	\$0	\$0	\$0	\$0	\$0	\$0	\$0	\$0	\$0
			Design/Build	\$0	\$0	\$0	\$0	\$0	\$0	\$0	\$0	\$0	\$0
40049	SR 112 Operational Improvements of Westbound Exit to NW 36th Street											\$0	\$45
	New flyover ramp from WB SR 112 to NW 36th Street west of 42nd Avenue. Allows WB traffic to bypass South River Drive and NW 42 Avenue reducing travel time and congestion.	SR 112 to NW 45th Avenue	Project Development	\$40	\$6	\$0	\$0	\$0	\$0	\$0	\$0	\$0	\$45
			Final Design	\$0	\$0	\$0	\$0	\$0	\$0	\$0	\$0	\$0	\$0
			Right-of-Way	\$0	\$0	\$0	\$0	\$0	\$0	\$0	\$0	\$0	\$0
			Construction	\$0	\$0	\$0	\$0	\$0	\$0	\$0	\$0	\$0	\$0
			Design/Build	\$0	\$0	\$0	\$0	\$0	\$0	\$0	\$0	\$0	\$0
40050	SR 112 Operational Improvements of Ramps to Okeechobee Rd											\$0	\$47
	New flyover ramp from WB SR 112 to Okeechobee Road west of 42nd Avenue and from Okeechobee Road to EB SR 112. Allows WB traffic to bypass NW 42 Avenue reducing travel time and congestion.	SR 112 to Okeechobee Rd.	Project Development	\$42	\$6	\$0	\$0	\$0	\$0	\$0	\$0	\$0	\$47
			Final Design	\$0	\$0	\$0	\$0	\$0	\$0	\$0	\$0	\$0	\$0
			Right-of-Way	\$0	\$0	\$0	\$0	\$0	\$0	\$0	\$0	\$0	\$0
			Construction	\$0	\$0	\$0	\$0	\$0	\$0	\$0	\$0	\$0	\$0
			Design/Build	\$0	\$0	\$0	\$0	\$0	\$0	\$0	\$0	\$0	\$0
40051	SR 112 Auxiliary Lanes											\$0	\$12,054
	Addition of auxiliary lanes or collector/distributor roads from 27th Avenue to 17th Avenue to improve operations in the area.	27th Avenue from 17th Avenue	Project Development	\$61	\$395	\$620	\$0	\$0	\$0	\$0	\$0	\$0	\$1,076
			Final Design	\$0	\$0	\$0	\$0	\$0	\$0	\$0	\$0	\$0	\$0
			Right-of-Way	\$0	\$0	\$250	\$250	\$0	\$0	\$0	\$0	\$0	\$500
			Construction	\$0	\$0	\$0	\$0	\$0	\$0	\$0	\$0	\$0	\$0
			Design/Build	\$0	\$0	\$0	\$5,158	\$5,320	\$0	\$0	\$0	\$0	\$10,478

MIAMI-DADE EXPRESSWAY AUTHORITY (MDX)

TENTATIVE FISCAL YEARS 2020-2024

FUNDED PROGRAM NEEDS

CAPITAL IMPROVEMENT PROGRAM

Project Number	Project Name		Phase	Expenditures Thru FY18	Projected FY19 Expenditures	FY20 THRU FY24 (\$000s)					Cost Remaining	Total Project Cost	
	Description	Project Limits				FY20	FY21	FY22	FY23	FY24			
40052	SR 924 Operational Improvements at NW 32nd Avenue											\$0	\$1,742
	SR 924 operational improvements to eliminate weaving and turning conflicts and enhance safety.	NW 32nd Avenue to NW 37th Avenue	Project Development	\$0	\$0	\$400	\$0	\$0	\$0	\$0	\$0	\$0	\$400
			Final Design	\$0	\$0	\$140	\$0	\$0	\$0	\$0	\$0	\$0	\$140
			Right-of-Way	\$0	\$0	\$200	\$0	\$0	\$0	\$0	\$0	\$0	\$200
			Construction	\$0	\$0	\$0	\$1,002	\$0	\$0	\$0	\$0	\$0	\$1,002
			Design/Build	\$0	\$0	\$0	\$0	\$0	\$0	\$0	\$0	\$0	\$0
40054	SR 874/SR 878 Interchange Ramp Improvements											\$19,853	\$28,947
	Extend SR 874 SB lane over Kendall Drive and extend the auxiliary lane from SB Kendall on-ramp to Killian off-ramp improving lane balance. It will also extend the SR 874 NB Kendall Drive on-ramp to the SR 878 87th Avenue off-ramp to maximize the weaving distance and improve safety.	Killian Drive to SW 87th Avenue	Project Development	\$0	\$0	\$0	\$0	\$0	\$2,087	\$0	\$0	\$0	\$2,087
			Final Design	\$0	\$0	\$0	\$0	\$0	\$0	\$0	\$0	\$0	
			Construction	\$0	\$0	\$0	\$0	\$0	\$0	\$0	\$0	\$0	
			Design/Build	\$0	\$0	\$0	\$0	\$0	\$0	\$7,007	\$19,853	\$26,860	
40055	SR 878 Operational Improvements to Off-Ramp at Dadeland Station											\$0	\$20,641
	SR 878 EB off-ramp direct connect to SW 70th Avenue in the vicinity of SW 84th Street to facilitate access to the Dadeland transit station.	SW 84th Street to SW 70th Avenue	Project Development	\$0	\$300	\$734	\$566	\$237	\$0	\$0	\$0	\$0	\$1,837
			Final Design	\$0	\$0	\$0	\$0	\$0	\$0	\$0	\$0	\$0	
			Right-of-Way	\$0	\$0	\$0	\$1,370	\$2,055	\$0	\$0	\$0	\$0	\$3,425
			Construction	\$0	\$0	\$0	\$0	\$0	\$0	\$0	\$0	\$0	
			Design/Build	\$0	\$0	\$0	\$0	\$7,233	\$8,146	\$0	\$0	\$15,379	
			Contingency Cost		\$500	\$750						\$0	\$1,250
CAPITAL IMPROVEMENT PROGRAM TOTALS (FUNDED)				\$6,392	\$15,905	\$4,619	\$10,230	\$14,845	\$10,233	\$7,007	\$19,853	\$89,084	

TOTAL FUNDED CIP FY 2020-2024	\$ 46,934
TOTAL FUNDED CIP THROUGH FY 2040	\$ 89,084

MIAMI-DADE EXPRESSWAY AUTHORITY (MDX)

REQUIRED DEPOSITS AND LONG-RANGE PROGRAM THROUGH FY 2040

REQUIRED DEPOSIT INTO THE R&R ACCOUNT

Project Number	Project Name		L RTP Priority	Phase	FY20 THRU FY24 (\$000s)					FY25 THRU FY40 (\$000s)														Total Project Cost			
	Description	Project Limits			FY20	FY21	FY22	FY23	FY24	FY25	FY26	FY27	FY28	FY29	FY30	FY31	FY32	FY33	FY34	FY35	FY36	FY37	FY38		FY39	FY40	FY41
TBD	Renewal & Replacement Program (R&R)	Systemwide	N/A	All						\$18,458	\$19,780	\$16,740	\$21,923	\$14,045	\$17,224	\$17,324	\$13,905	\$6,818	\$10,369	\$13,076	\$7,935	\$43,828	\$10,261	\$1,875	\$23,235		\$256,796

TOTAL UNFUNDED R&R FY 2020-2024 \$ -
 TOTAL UNFUNDED R&R THROUGH FY 2040 \$ 256,796

LONG-RANGE PROGRAM

Project Number	Project Name		L RTP Priority	Phase	FY20 THRU FY24 (\$000s)					FY25 THRU FY40 (\$000s)														Total Project Cost			
	Description	Project Limits			FY20	FY21	FY22	FY23	FY24	FY25	FY26	FY27	FY28	FY29	FY30	FY31	FY32	FY33	FY34	FY35	FY36	FY37	FY38		FY39	FY40	FY41
11212	SR 112 Ramp Improvements at NW 37th Avenue																										\$14,249
PARTIALLY FUNDED	New partial interchange at SR 112 and NW 37th Avenue. New movements include eastbound on-ramp at NW 37th Avenue as well as a westbound off-ramp at NW 37th Avenue. Completion of PD&E, Right-Of-Way and Design-Build not funded.	SR 112 at NW 37th Avenue	2 (2026-2030)	Project Development						\$1,551																\$1,551	
				Right-of-Way						\$3,000	\$3,000														\$6,000		
				Design/Build							\$2,679	\$4,019													\$6,698		
11213	SR 112 West Extension to HEFT																									\$0	
DEFUNDED			3 (2031-2035)	Project Development																					\$0		
				Final Design																					\$0		
				Right-of-Way																					\$0		
				Construction																					\$0		
				Design/Build																					\$0		
87413	SR 874 /SW 72nd Street Interchange									\$401															\$11,306		
PARTIALLY FUNDED	New southbound exit ramp to SW 72nd Street and new northbound entrance ramp to SR 874 from SW 72nd Street. Right-Of-Way and Design-Build not funded.	NW 137th Avenue to NW 17th Avenue	2 (2026-2030)	Project Development							\$577														\$401		
				Right-of-Way						\$4,131	\$6,197														\$577		
				Design/Build																					\$10,329		
92404-001	SR 924 Extension West to the Homestead Extension of the Florida Turnpike																								\$135,318		
PARTIALLY FUNDED	Expressway extension from SR 924 west to the Homestead Extension of the Florida's Turnpike (HEFT). This estimate includes Segment 1 - HEFT to 107th Avenue including feasibility analysis for a potential ramp at 87th Ave. and Segment 2 - 107th Avenue to 97th Avenue.	HEFT to NW 97th Avenue	3 (2031-2035)	Project Development												\$1,197									\$1,197		
				Right-of-Way												\$4,109	\$8,217	\$8,217							\$20,543		
				Design/Build												\$6,815	\$22,716	\$45,431	\$23,851	\$14,765					\$113,579		
92404-002	SR 924 Extension West to the Homestead Extension of the Florida Turnpike																								\$132,542		
PARTIALLY FUNDED	Expressway extension from SR 924 west to the Homestead Extension of the Florida's Turnpike (HEFT). This estimate includes only Segment 3 - 97th Avenue to SR 826.	NW 97th Avenue to SR 826	3 (2031-2035)	Project Development																					\$0		
				Right-of-Way																					\$0		
				Design/Build												\$26,508	\$53,017	\$27,834	\$25,183						\$132,542		
92407	SR 924 Extension East to I-95																								\$0		
DEFUNDED	New expressway extension from SR 924 at 32nd Avenue east to I-95 as part of the MDX Master Plan and the MPO Long Range Transportation Plan.	Existing SR 924 at NW 32nd Avenue to I-95	2-3 (2026-2030) (2031-2035)	Project Development																					\$0		
				Final Design																					\$0		
				Right-of-Way																					\$0		
				Construction																					\$0		
				Design/Build																					\$0		
20001	Connect 4 Express																								\$0		
DEFUNDED	PD&E, Right-Of-Way, Final Design and Construction of new expressway connecting SR 836, SR 112 and SR 924. Includes system interchanges with SR 112 and SR 924 and potential service interchanges with NW 54th Street, NW 79th Street and NW 103rd Street with connectors to NW 37th Avenue.	SR 836 to SR 924	UNFUNDED	Project Development																					\$0		
				Final Design																					\$0		
				Right-of-Way																					\$0		
				Construction																					\$0		
				Design/Build																					\$0		
20003	U.S. 1 Express Lanes																								\$0		
DEFUNDED	Conversion of existing Busway into Managed Lane facility as part of the MDX Master Plan and the MPO Long Range Transportation Plan.	SW 344th Street to SW 88th Street	UNFUNDED	Project Development																					\$0		
				Final Design																					\$0		
				Right-of-Way																					\$0		
				Construction																					\$0		
				Design/Build																					\$0		
40049	SR 112 Operational Improvements of Westbound Exit to NW 36th Street																								\$69,864		
DEFERRED	New flyover ramp from WB SR 112 to NW 36th Street west of 42nd Avenue. Allows WB traffic to bypass South River Drive and NW 42 Avenue reducing travel time and congestion.		N/A	Project Development												\$2,091	\$1,198	\$1,414							\$4,703		
				Right-of-Way												\$500	\$2,500	\$1,000							\$4,000		
				Design/Build													\$3,714	\$27,118	\$18,569	\$11,760					\$61,161		
40050	SR 112 Operational Improvements of Ramps to Okeechobee Rd																								\$147,619		
DEFERRED	New flyover ramp from WB SR 112 to Okeechobee Road west of 42nd Avenue and from Okeechobee Road to EB SR 112. Allows WB traffic to bypass NW 42 Avenue reducing travel time and congestion.	SR 112 at Okeechobee Road	N/A	Project Development												\$4,293	\$2,286	\$2,416							\$8,995		
				Right-of-Way												\$1,600	\$2,400	\$2,400	\$1,600						\$8,000		
				Design/Build													\$7,872	\$25,636	\$52,510	\$27,551	\$17,055				\$130,624		
300XX	SR 112 Bridge Replacement & Roadway Upgrade																								\$251,064		
DEFERRED	Replacement of bridges and updating of roadway with new standard shoulders and safety treatments.	SR 112	N/A	Project Development							\$1,022	\$1,675	\$1,022	\$368											\$4,086		
				Right-of-Way									\$3,000	\$4,000	\$3,000										\$10,000		
				Design/Build												\$13,804	\$86,640	\$71,093	\$65,441						\$236,977		
				Contingency Cost																					\$0		
TRANSPORTATION IMPROVEMENT PROGRAM TOTALS (UNFUNDED)																									\$761,962		

TOTAL UNFUNDED FY 2020-2024 \$ -
 TOTAL UNFUNDED THROUGH FY 2042 \$ 761,962